

Piston Valves

Description :

Cast steel piston valves provide perfect tightness and durable stability on different mediums such as steam, superheated steam, heat transfer fluid, ammonia, L.P.G., acids, alkalies, etc.

Size and Pipe Connections :

65, 80, 100, 125 NB Flanged Ends.

Flange Type : ANSI 300

150 NB / 200 NB Flanged Ends.

Flange Type : ANSI 150 / ANSI 300

IBR APPROVED VALVES AVAILABLE.

Limiting Conditions :

ANSI 300

Maximum operating Pressure : 51 bar g

Maximum operating temperature : 427° C

Maximum Hydraulic test Pressure : 102 bar g

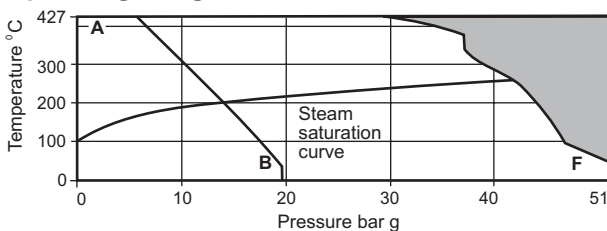
ANSI 150

Maximum operating Pressure : 19.6 bar g

Maximum operating temperature : 427° C

Maximum Hydraulic test Pressure : 39.2 bar g

Operating Range :



 The product must not be used in this region.

A - B Flanged ANSI 150

A - F Flanged ANSI 300

How to order :

Example : Forbes Marshall 65 / 80 / 100 / 125 / 150 / 200 NB Piston Valve with ANSI 300 Flanged connection IBR or NIBR.

Please specify medium.

Available Spares :

Body Sealing Stack Set, Bonnet Sealing Ring & Gland Sealing Stack.

How to order Spares :

Order Spares as per the code no. specified in the 'User Manual'.

Installation :

The Valve is designed for installation in a vertical line or horizontal line with inlet as per the arrow direction. To open the valve turn hand wheel till it stops at the top and to close turn hand wheel till it touches the bonnet. Do



not use 'F' Key. If any leakage is observed during operation at the outlet, close valve fully and tighten Opposite Nuts (16) equally half or one turn until leakage stops. If any leakage is observed from the gland tight gland nut (13) till leakage stops.

Safety Information :

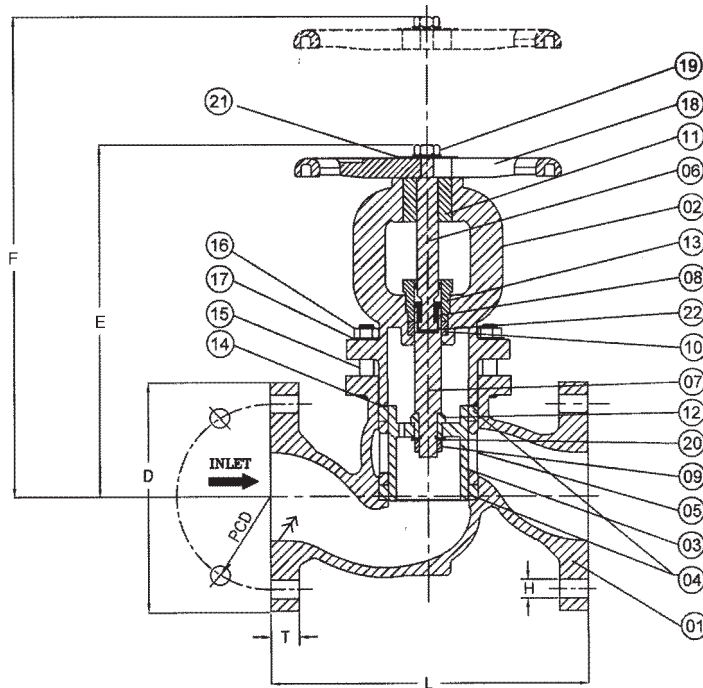
Pressure

Before attempting any maintenance of the Valve, ensure that pressure is isolated and safely vented to atmosphere. Do not assume that the system is depressurized even when a pressure gauge indicates zero.

Maintenance :

Maintenance of Piston valve is very easy and can be done while the valve is in position & not in service. Please refer 'User Manual' for replacement of Body sealing stack set, Bonnet Sealing Ring & Gland sealing stack.

Lubricate spindle regularly with Molykote M30 oil.



Always open & close Valve fully
Do not use 'F' Key

Material :

No	Part	Material	
1	Body	Cast Steel	ASTM A 216 Gr. WCB
2	Bonnet	Cast Steel	ASTM A 216 Gr. WCB
3	Piston	Stainless Steel	ASTM A 351 CF8M
4	Body Sealing Stack	S/S Reinforced Graphite	
5	Spacer	Stainless Steel	ASTM A 743 CA 15
6	Spindle	Stainless Steel	ASTM A 276 TP 410
7	Stem	Stainless Steel	ASTM A 276 TP 304
8	Split Nut	Stainless Steel	ASTM A 276 TP 410
9	LH Nut	Stainless Steel	ASTM A 276 TP 304
10	Gland Sealing Stack	S/S Reinforced Graphite	
11	Threaded Bush	Ph. Bronze	
12	Back Seat	Stainless Steel	ASTM A 276 TP 410
13	Gland Nut	Stainless Steel	ASTM A 276 TP 410
14	Bonnet Sealing Ring	Graphite	
15	Stud	Carbon Steel	ASTM A 193 GR B7
16	Nut	Carbon Steel	ASTM A 194 GR 2H
17	Beleville Washer	Spring Steel	50 CrV4
18	Handwheel	S.G. Iron / Malleable Iron	
19	Nyloc Nut	Carbon Steel	
20	Washer	Stainless Steel	ASTM A 276 TP 304
21	Name Plate	Stainless Steel	
22	Thrust Plate	Stainless Steel	ASTM A 276 TP 410

Dimensions:(approximate) in millimeters

SIZES	ANSI CLASS	L	D	PCD	H	No. of Holes	T	E	F	Approx. Weight
65NB	300	292	φ 190.5	149.2	φ 22.2	8	25.4	335	400	26 Kg.
80NB	300	318	φ 210	168	φ 22	8	29	320	384	37 Kg.
100NB	300	356	φ 254	200	φ 22	8	32	395	479	58 Kg.
125NB	300	400	φ 280	235	φ 22	8	35	446	540	87 Kg.
150NB	300	445	φ 318	270	φ 22	12	36.5	486	598	117 Kg.
150NB	150	406	φ 279	241	φ 22	8	26	486	598	90 Kg.
200NB	300	555	φ 381	330	φ 25.4	12	41	591	728	210 Kg.
200NB	150	495	φ 343	298.4	φ 22	8	28.4	591	728	164 Kg.

Subject to change without notice.

1000 /NOVEMBER / 2006 / 6090

FTIS - 4 / R2

Manufactured Marketed by :

Forbes Marshall Pvt. Limited

A Forbes Marshall Company

P. B. No. 29, Mumbai - Pune Road, Kasarwadi, Pune - 411 034. India.

Tel. : 91 (0) 020 27145595 Fax : 91 (0) 020 27147413, 27147593

URL : <http://www.forbesmarshall.com/spirax>

Branches : Ahmedabad, Alibag, Bangalore, Bharuch, Chandigarh, Chennai,
Coimbatore, Delhi, Hyderabad, Jamshedpur, Kolkata, Mumbai, Nagpur,
Navi Mumbai, Pune, Surat, Vadodara, Visakhapatnam.

Representatives : Bhopal, Indore, Madurai, Pondicherry.