

BEKOKAT® - THE OPTIMUM FOR SOPHISTICATED REQUIREMENTS

Conventional compressed-air treatment has technical and economic limits, especially when the requirements are exceptionally stringent.

Therefore, new approaches and technologies are required.

With an achievable residual oil content of max. 0.003 mg/m³ the BEKO catalysis technology is setting new standards in compressed-air conditioning. After an intensive development, BEKOKAT® realizes the possibilities of this technology and combines it with the requirements of its practical utilization together with a high level of reliability.

BEKOKAT® finally made the breakthrough.



+1:

CONSTANT, OIL-FREE COMPRESSED AIR, MAX. RESIDUAL OIL CONTENT 0.003 mg/m³*

+2:

PROCESS-SAFE, INDEPENDENT OF AMBIENT TEMPERATURE, AIR HUMIDITY, OIL-INFLOW CONCENTRATION

+3:

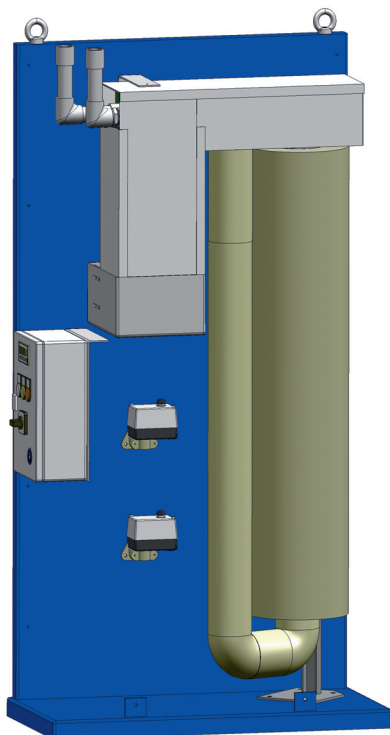
ENVIRONMENTALLY FRIENDLY, NO HAZARDOUS WASTE. CLEAN, OIL-FREE CONDENSATE

+4:

LONG SERVICE LIFE

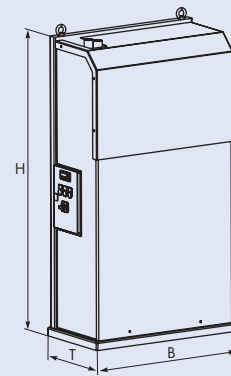
+5:

PART-LOAD OPERATION WITHOUT RESTRICTION



*Better than DIN EN8573-1/ISO8573-1, Class 1 oil content

BEKOKAT® - THE OPTIMUM FOR SOPHISTICATED REQUIREMENTS



TECHNICAL DATA

Model	Volume flow		Pressure bar	Connection	Weight kg	Measurements in mm			installed power kW
	Nm ³ /min	Nm ³ /h				B	T	H	
CC - 060	1	60	16	1"	130	800	420	1440	1.15
CC - 120	2	120	16	1"	200	950	450	1440	1.6
CC - 180	3	180	16	1 1/4"	300	1200	520	1540	2.1
CC - 300	5	300	16	1 1/2"	600	1450	580	1640	3
CC - 600	10	600	16	2"	900	1700	1030	1910	6.5
CC - 1200	20	1200	16	DN65	1600	1800	1030	2100	13
CC - 2400	40	2400	16	DN80	1900	2500	1150	2400	28.5
CC - 3000	50	3000	16	DN100	2200	2500	1150	2400	29

Standard voltage: 230 V/1 Ph./50 Hz, all other voltages on request.

Other models on request.

operating pressure bar (e)	4	5	6	7	8	9	10	11	12	13	14	15	16
operating pressure psi (g)	58	72.5	87	101.5	116	130.5	145	159.5	174	188.5	203	217.5	232
correction factor (coefficient)	0.63	0.75	0.88	1	1.13	1.25	1.36	1.5	1.63	1.75	1.88	2	2.1

As standard, all BEKOKAT are designed for the operating pressure 7 bar (ü) and a maximum operating pressure of 16 bar (ü).

The activity values refer to an inlet pressure of 7 bar (ü).

In case of a differing inlet pressure, please multiply by the correction actors.

FUNCTION OF THE CATALYST

